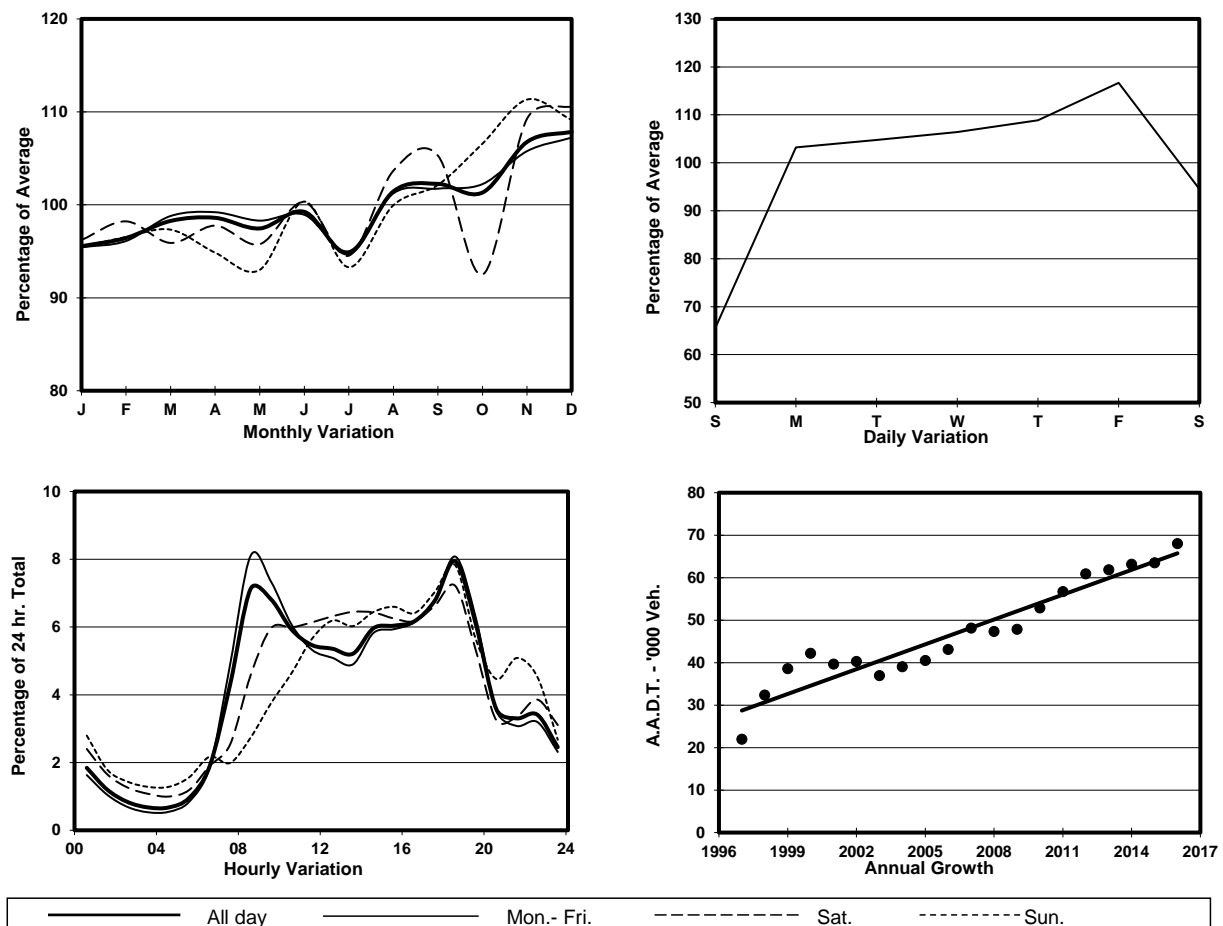


YEAR

2016

LINK WESTERN HARBOUR CROSSING (from TOLL PLAZA to
SOUTH PORTAL)CORE STATION
ROAD NETWORK
ROAD TYPE1026
MAJOR
URBAN TRUNK ROAD

1. TRAFFIC FLOW VARIATION AND GROWTH



2. TRAFFIC CHARACTERISTICS (BY DIRECTION)

Parameter	All - Day	Mon. - Fri.	Sat.	Sun.
SOUTH BOUND				
A.A.D.T.	33570	36900	32690	22290
R 12 / 24 - %	75.8	77.8	71.9	65.2
R 16 / 24 - %	88.9	90.1	85.9	83.8
AM Peak Hour	0800-0900	0800-0900	0900-1000	0900-1000
One-way flow at AM peak hour	3040	3820	2570	940
T - % (AM)	-	14.9	-	-
PM Peak Hour	1800-1900	1800-1900	1800-1900	1800-1900
One-way flow at PM peak hour	2230	2410	2140	1750
T - % (PM)	-	9.4	-	-
Prop.of commercial vehicles - 16 hr.	-	11.1	-	-
NORTH BOUND				
A.A.D.T.	34410	37940	32870	22930
R 12 / 24 - %	70.5	71.3	69.4	65.4
R 16 / 24 - %	90	91	87	86.2
AM Peak Hour	0800-0900	0800-0900	0900-1000	0900-1000
One-way flow at AM peak hour	1800	2240	1350	760
T - % (AM)	-	10	-	-
PM Peak Hour	1800-1900	1800-1900	1800-1900	1800-1900
One-way flow at PM peak hour	3160	3640	2590	1780
T - % (PM)	-	11	-	-
Prop.of commercial vehicles - 16 hr.	-	9	-	-

3. OTHER INFORMATION AND COMMENT

4. Vehicle classification and occupancy - Monday to Friday

Time		Class of vehicle									
		Motor	Private	Taxi	Private	PLB	Goods veh.		Non	Fr. Bus	
		Cycle	Car		LB		Light	M & H	Fr. Bus	SD	DD
0700-0800	Pro	2.5	32.9	31.8	1.2	3.3	14.1	3.7	3.9	0.1	6.6
	Ocp	1.1	1.3	2.2	6.9	16.8	1.7	1.8	35.5	12.0	62.8
0800-0900	Pro	1.6	49.3	22.3	0.1	2.1	11.4	2.6	4.8	0.1	5.8
	Ocp	1.1	1.3	2.1	1.5	16.8	1.9	1.5	37.9	24.5	68.3
0900-1000	Pro	1.6	48.7	21.7	0.2	1.9	15.4	4.4	1.7	0.1	4.3
	Ocp	1.0	1.4	2.2	3.3	16.5	1.8	1.7	27.5	20.0	40.0
1000-1100	Pro	1.7	46.6	25.4	0.3	1.3	16.1	3.7	0.6	0.1	4.3
	Ocp	1.1	1.4	2.3	3.7	15.2	1.7	1.6	18.3	17.0	33.7
1100-1200	Pro	0.9	49.2	26.5	0.6	1.0	13.2	2.8	1.2	0.1	4.5
	Ocp	1.0	1.4	2.5	2.2	14.0	1.7	1.4	17.4	22.8	35.8
1200-1300	Pro	1.0	50.2	24.4	0.2	1.3	13.8	3.1	2.0	0.1	4.0
	Ocp	1.1	1.5	2.4	2.5	12.7	1.8	1.4	18.3	9.0	34.3
1300-1400	Pro	0.9	43.4	25.2	0.5	1.4	16.3	5.4	2.2	0.1	4.6
	Ocp	1.0	1.5	2.5	2.8	16.0	1.6	1.4	10.6	19.3	37.2
1400-1500	Pro	1.1	47.4	24.5	0.4	1.0	16.3	4.2	1.5	0.1	3.8
	Ocp	1.0	1.6	2.5	2.5	14.1	1.9	1.5	9.6	21.0	38.2
1500-1600	Pro	0.6	52.2	23.5	0.3	0.9	13.5	3.1	1.7	0.1	4.0
	Ocp	1.0	1.5	2.4	5.0	14.0	1.8	1.3	14.5	19.0	35.1
1600-1700	Pro	1.2	52.5	21.5	0.8	0.9	13.9	3.0	1.7	0.1	4.4
	Ocp	1.2	1.5	2.4	3.0	15.0	1.8	1.6	18.2	24.0	39.6
1700-1800	Pro	2.7	54.4	21.8	0.1	1.8	10.7	1.5	1.4	0.1	5.6
	Ocp	1.1	1.5	2.4	10.0	16.8	1.9	1.7	8.1	13.3	49.3
1800-1900	Pro	2.0	58.1	20.4	0.0	2.7	6.4	1.1	4.4	0.1	4.8
	Ocp	1.2	1.3	2.3	0.0	16.3	1.5	1.5	33.3	23.0	70.1
1900-2000	Pro	1.9	63.2	22.2	0.1	1.7	2.8	0.7	2.5	0.1	5.0
	Ocp	1.2	1.3	2.3	2.0	16.9	1.5	1.9	27.7	17.5	51.4
2000-2100	Pro	1.2	58.2	27.1	0.0	2.0	1.2	0.5	2.0	0.1	7.8
	Ocp	1.6	1.7	2.3	0.0	16.3	1.4	2.0	25.9	24.3	42.9
2100-2200	Pro	1.6	47.0	36.9	0.0	2.2	2.2	1.0	1.2	0.1	8.0
	Ocp	1.3	1.5	2.3	0.0	13.8	1.9	2.2	22.0	31.0	39.0
2200-2300	Pro	1.1	45.4	42.1	0.0	2.5	0.9	0.2	1.6	0.1	6.3
	Ocp	1.3	1.4	2.3	0.0	15.9	2.0	1.0	18.1	10.5	41.5
16 hours	Pro	1.5	50.6	24.8	0.3	1.7	11.1	2.7	2.3	0.1	5.0
	Ocp	1.1	1.4	2.3	3.8	15.9	1.8	1.6	26.5	19.3	47.4

Legend

Pro. Proportion of vehicles in % (Sum may not add up to 100% due to figure rounding)*

Ocp. Average occupancy of vehicles including both driver and passengers*

M&H Medium and Heavy

***** All traffic data are collected from combined bounds except for one way traffic